

ELECTRONIC UNIVERSAL TESTING MACHINE (FLOOR-STANDING DOOR TYPE)

We offer UTM class 1 and class 2 at a lower price. Please contact our sales team for consultation.

Class 0.5

Standard of universal testing machine

ASTM E74 - Practice for Calibration of Force Measuring Instruments
for Verifying the Force Indication of Testing Machines

ASTM E83 - Practice for Verification and Classification on
Extensometer Systems

ASTM E1012 - Practice for Verification of Test Frame and Specimen
Alignment Under Tensile and Compressive Axial Force Application

ASTM E1856 - Standard Guide for Evaluating Computerized Data
Acquisition Systems Used to Acquire Data from Universal Testing
Machines

JIS K7171 - Standard for determine the flextural strength for plastic
material & products



FEATURES

1. Adopt fully digital AC servo speed control system and servo motor as the drive system, with high speed control accuracy and stable performance.
2. Microcomputer control and data processing software automatically collects and processes test data, draws various curves and prints test reports;
3. Good humanized design makes the test operation easier, and the test operations can be automatically completed on the computer through the mouse.
4. This machine fully meets the requirements of national standards and can conduct testing and data processing according to GB, ISO, JIS, ASTM, DIN and various standards provided by users.
5. It has good scalability and can cope with various tests of different samples by changing the fixture.
6. It has three control modes: stress, strain and displacement. The control modes can be switched randomly.
7. It has functions such as mechanical limit protection, overload protection, overcurrent protection, and leakage protection.



Wedge Fixture (included)

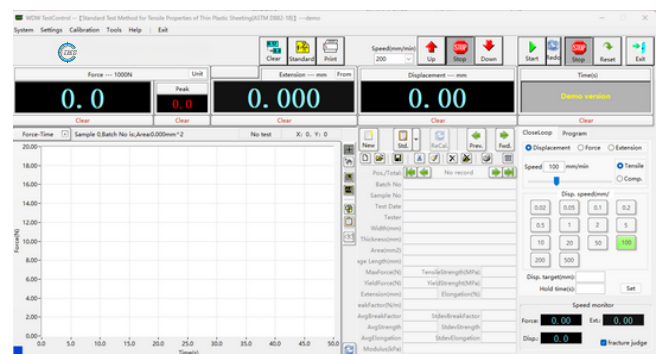


Compression Fixture (included)

SPECIFICATIONS

Model	IUM-50E	IUM-100E	IUM-150E	IUM-200E	IUM-300E	IUM-600E
Max Force	50kN	100kN	150kN	200kN	300kN	600kN
Force measurement range	0.4% ~ 100%FS without binning throughout the process					
Test force indication accuracy	Better than $\pm 1\%$ of the indication value (precision level can reach $\pm 0.5\%$)					
Deformation accuracy	Better than $\pm 1\%$ of the indication value					
Crossbeam displacement measurement (mm)	Resolution 0.001					
Deformation range	2%-100%					
Large deformation measurement range	10-800 (optional)					
Large deformation indication accuracy	Within $\pm 1\%$ of the indication value					
Displacement resolution (n)	Resolution 0.001					
Displacement rate adjustment range	(0.001-500) mm/min can be set arbitrarily. Higher speed can be customized.					0.001 ~ 250mm/min
Displacement rate spatial accuracy	$\leq \pm 1\%$					
Stretch stroke (mm)	800	800	650	600	600	600
Test space (mm)	1200	1200	1300	1400	1400	1450
Host size (mm)	855 × 400 × 1980	905 × 500 × 2000	(955 × 500 × 2190	1104 × 600 × 2430	1104 × 600 × 2430	1365 × 870 × 2500
Testing machine weight (kg)	about 450	about 600	about 800	About 1250	About 1250	about 2500
Motor power (kw)	1	1.5	2	2.5	2.5	4.5
Testing machine auxiliary tools	Stretching aids, compression aids, bending aids and other aids (optional) can be customized					
Testing machine style	Floor-to-ceiling door type					

Standard delivery	Qty
Main unit	1
Computer	1
Printer	1
Control box	1
Software	1
Compression fixture (customized)	1
Tensile fixture (customized)	1



IMS software for IUM-SERI